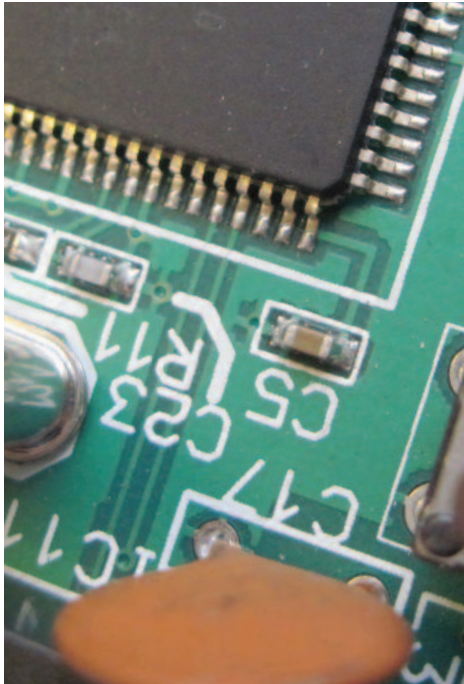


## 4 to 20mA Interface



### Overview

The (CGI420) and (CGI420R) are 4 to 20mA intelligent addressable modules designed to interface with gas detection modules and are compatible with Cooper intelligent addressable control panels.

These interfaces have a unique address on the loop and built in isolator for loop short circuit protection.

Each of the DIL switches JP1, JP2 and JP3 can be programmable to set the threshold level for prealarm1, pre-alarm 2 and alarm respectively. This can be expressed as a percentage of L.E.L (lower explosion limit) or PPM (parts per million).

### Product Codes

Code	Description
CGI420	4 to 20mA Interface
CGI420R	4 to 20mA Interface (relay output)

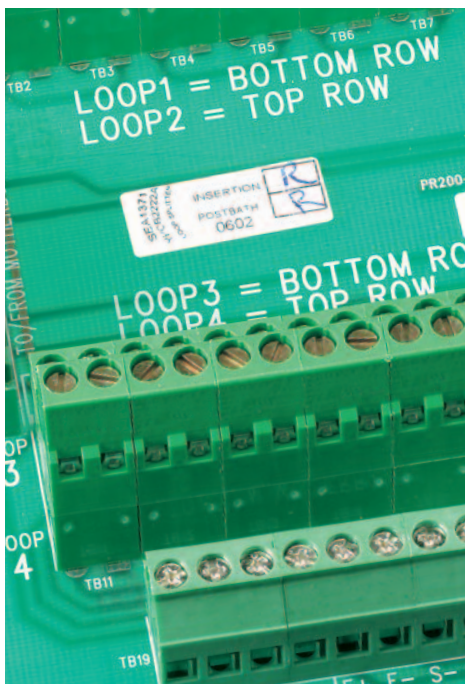
### Features

- Soft addressed
- Integral short circuit isolator
- Single address
- Ideal interface for gas detection modules
- 3 volt free outputs for each of the 3 alarm levels (optional)
- Requires external power supply

### Benefits

- The supply to the gas detector is taken directly from the interface
- Programmable levels of sensitivity

## Loop Splitter Unit (approved)



### Overview

The loop splitter interface (ZPCB2222) allows the expansion of the Cooper CF3000 from a 4 loop panel to a 16 loop panel.

Each loop of the CF3000 is connected to 4 sub loops totalling a maximum number of 200 addresses per main loop.

This interface is mainly applicable in countries where the mixing of detectors, sounders, callpoints and interfaces are not permissible on the same loop or the number of devices per loop is limited to a small number.

### Product Codes

Code	Description
ZPCB2222	Loop Splitter Unit

### Features

- Loop connected
- Splits each connected loop into 4 smaller loops

### Benefits

- Allows greater system design flexibility
- Permits callpoints to be wired on separate loop
- Supports greater number of smaller loops